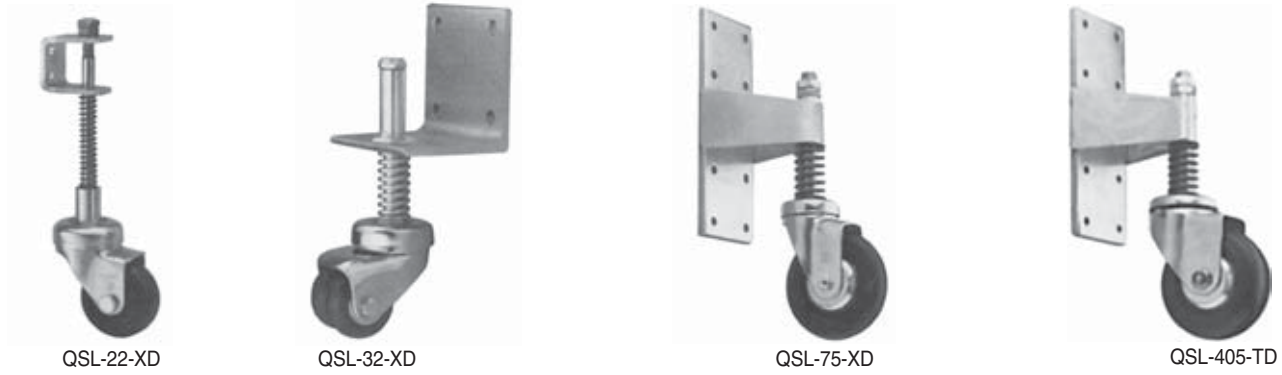


**SPECIALTY CASTERS**

**SPRING LOADED CASTERS**



Providing from 7/8" to 1-1/4" vertical travel, these casters are designed for uneven surfaces. They are ideal for gates or doors.

WHEEL DIAMETER	DYNAMIC LOAD	PART #	OVERALL HEIGHT NO LOAD	OVERALL HEIGHT MAX. LOAD	SWIVEL OFFSET C/W BRACKET
2"	90 lbs.	QSL-22-XD	7.375"	6.375"	1.750"
	200 lbs.	QSL-32-XD	8.500"	7.625"	3.500"
5"	300 lbs.	QSL-75-XD	13.250"	12.000"	5.375"
	400 lbs.	QSL405-TD	13.250"	12.000"	5.375"

- Starts to compress at ~8 lbs.
- ~28 lbs. at end of compress
- ~1" travel



A good choice on bumpy ground.

Spring Loaded caster (with load related locking effect) comes in swivel and rigid models. The rigid bolt plate can be turned 90°. Gray non-marking rubber tread on nylon core.

WHEEL DIAMETER	DYNAMIC LOAD	PART #	DESCRIPTION	INSTALLED HEIGHT	BOLTING PLATE
2" x 11/16"	88 lbs.	177A33C050BZPS	Swivel Caster	5.29/32"	2.5/16"H 1.29/32"W
		176A33C050BZPS	Rigid Caster		

**SPRING LOADED LADDER CASTERS**

- Starts to compress at ~9 or 10 lbs.
- ~18 to 20 lbs. at end of compress
- ~1-1/4" travel

Quality replacement casters for rolling ladders. Soft rubber wheel with plain bore. Stem dimensions 5/16" x 2-7/8" on top of 9/16" x 1-7/8" base section.

WHEEL DIAMETER	DYNAMIC LOAD	PART #	DESCRIPTION	SWIVEL RADIUS
2"	75 lbs.	9696X282RP	Soft rubber	1-7/8"
3"	95 lbs.	L13696X282RP		2-5/8"



L13696X282RP

**SPECIALTY CASTERS**

**SCAFFOLDING CASTERS**



8980-31-RCI-TG

The total lock brake system stops both the wheel and the swivel simultaneously, and is hand or foot operated. When fully locked the brake system will not disengage on its own. It's called a scaffold caster, but it is also ideally suited for floodlight stands, motion picture equipment and other movable work platforms that need to roll or stay put.

WHEEL DIAMETER	TREAD WIDTH	DYNAMIC LOAD	PART #	FINISH	WHEEL MATERIAL	SWIVEL RADIUS	LOAD HEIGHT
8"	2"	500 lbs.	8980-**-RCI-TG	Zinc	Rubber Cast Iron	6-1/4"	9-1/2"
		800 lbs.	8980-**-PCI-TG		Polyurethane		

Full Scale

1-3/8" Dia. x 4"  
1/2" hole  
2-1/2" from base



31SC

1-7/16" Dia. x 4"  
3/8" hole  
2-1/2" from base



32SC

1-1/4" Dia. x 4"  
1/2" hole  
2-1/2" from base



33SC

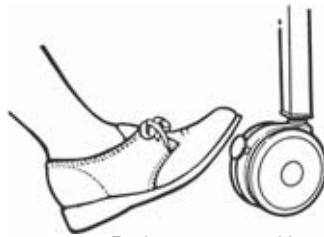
**TWIN WHEEL TRAVELAID CASTERS**



TA4541-GR

**TRAVELAID**

**Nylon  
Twin Wheel Casters**



Brake operates with the touch of the toe



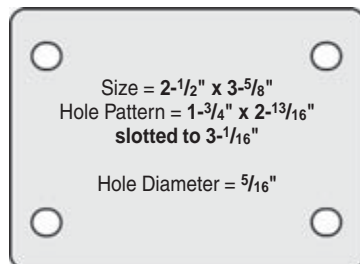
TA4541-GR-B

This caster was born and bred in Great Britain originally for the rough and tumble world of shopping carts. That's hard-nosed testimony to its durability. The Travelaid has a ball bearing raceway for each wheel plus a ball bearing seat for the fastening. The body and wheels are Nylon 6, impact and corrosion resistant, colorfast and color integrated. Treads are genuine rubber for hard floors, and conductive rubber treads are an available option. Excellent for medical equipment and furniture.

WHEEL DIAMETER	MOUNTING CODE	DYNAMIC LOAD	PART #	PART # W/BRAKE	FINISH	WHEEL MATERIAL	SWIVEL RADIUS	LOAD HEIGHT
4-1/2"	T41	132 lbs.	TA4541-BK	TA4541-BK-B	Black	Soft Rubber	3-17/32" 3-7/8[-B]	5"
			TA4541-GR	TA4541-GR-B	Gray			
	P20		TA4520-BK	TA4520-BK-B	Black			
			TA4520-GR	TA4520-GR-B	Gray			
5"	T41		TA5041-BK	TA5041-BK-B	Black		3-15/16" 4-3/8[-B]	5-1/2"
			TA5041-GR	TA5041-GR-B	Gray			
	P20		TA5020-BK	TA5020-BK-B	Black			
			TA5020-GR	TA5020-GR-B	Gray			

See full Size Mountings on pages 134 , 137

**Mounting Options** (Not to Scale)



P20



T41

# SPECIALTY CASTERS

## TWIN WHEEL CASTERS



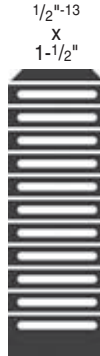
9009XTS1/2X1-1/2RP  
w/OPTIONAL BRAKE



16-32-XD



S82



T10

Full Scale



P20

These casters utilize two wheels for additional load capacity and floor protection. A double level, hardened full ball bearing swivel for low overall height and extra load capacity. The 16-32-XD model features super soft neoprene wheels for exceptional floor protection even on wood floors.

WHEEL DIAMETER	TREAD WIDTH	MOUNTING CODE	DYNAMIC LOAD	PART #	WHEEL MATERIAL	SWIVEL RADIUS	LOAD HEIGHT		
2"	13/16"	P20	125 lbs.	9006RP *	Baco (Soft) Rubber	2"	2-27/32"		
			180 lbs.	9009RP *	Atlasite (Hard) Rubber				
			160 lbs.	8022-01-SR	Soft Rubber				
			200 lbs.	8022-01-HR	Hard Rubber				
		1"	1"	S82	160 lbs.	8022-11-SR	Soft Rubber	1-7/8"	2-13/16"
					200 lbs.	8022-11-HR	Hard Rubber		
				P20	125 lbs.	9006X2RP *	Baco (Soft) Rubber	2"	2-5/8"
					180 lbs.	9009X2RP *	Atlasite (Hard) Rubber		
	125 lbs.				9006XTS1/2X1-1/2RP *	Baco (Soft) Rubber			
	180 lbs.				9009XTS1/2X1-1/2RP *	Atlasite (Hard) Rubber			
		P20	300 lbs.	16-32-XD Rigid avail.	Neoprene Super Roll - BB	2-3/8"	3-3/8"		

\* Thumb Screw Brakes Available

## BOLT HOLE/PLATE CASTER

### FEATURES

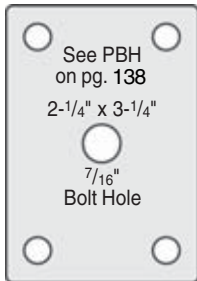
- Zinc Plated Finish
- Full Double Ball Hardened Raceways
- Total Lock - Both Swivel and Wheel
- Gray non-marking Rubber



KSP65/ZPTB



KSP75/ZF  
rigid



This Total Brake caster is widely used on lighter hospital and display equipment. They're recommended when the maximum stability of a braked cart is needed. When the swivel is locked together with the wheel, the cart becomes very stable. Rigid rig does not have center hole.

WHEEL DIAMETER	TREAD WIDTH	MOUNTING CODE	DYNAMIC LOAD	PART #		WHEEL MATERIAL	SWIVEL RADIUS	LOAD HEIGHT
				SWIVEL	RIGID			
2-1/2"	7/8"	PBH	100 lbs.	KSP65/ZPTB	KSP65/ZF	Soft Rubber Gray	3-1/2"	3-25/32"
3"				KSP75/ZPTB	KSP75/ZF		4"	4-3/16"

**LOW PROFILE STEEL WHEEL CASTER**



H2681X187



X187  
Full Scale



H2681XTS1/2" X 3/4"



T21  
Full Scale

A rugged, easy swiveling caster designed to take heavy loads as a replacement in many automotive jacks. Adding to its unusual strength is the heavy, wide wheel and the low overall height. Can be used in other applications where ruggedness is essential.

WHEEL DIAMETER	TREAD WIDTH	MOUNTING CODE	DYNAMIC LOAD	PART #	WHEEL MATERIAL	SWIVEL RADIUS	LOAD HEIGHT
2-1/2"	1-1/4"	X187	500 lbs.	H2681X187	Semi Steel	2-3/8"	3-1/4"
		T21		H2681XTS1/2X3/4			

**BUSINESS MACHINE CASTERS**



S3998-2

See P30  
on pg. 137  
3-1/8" x 4-1/8"



8030-03-PHN-SB

The principal requirement for casters in this specialized area are heavy load capacity, low overall height and floor or carpet protection. This is achieved by a caster that has a very wide wheel. The swivels are double level, hardened full ball bearing for low height and added load capacity. Wheels have roller bearings.

WHEEL DIAMETER	TREAD WIDTH	MOUNTING CODE	DYNAMIC LOAD	PART #	WHEEL MATERIAL	SWIVEL RADIUS	LOAD HEIGHT
3 "	1-13/16"	P30	600 lbs.	8030-03-PHN-SB	Phenolic	2-5/16"	4-1/16"
			650 lbs.	S3688-2		2-13/16"	3-31/32"
			900 lbs.	S3998-2		3-1/8"	4-5/16"

**SPECIALTY CASTERS**

**AIR CARGO/CONVEYOR CASTER**

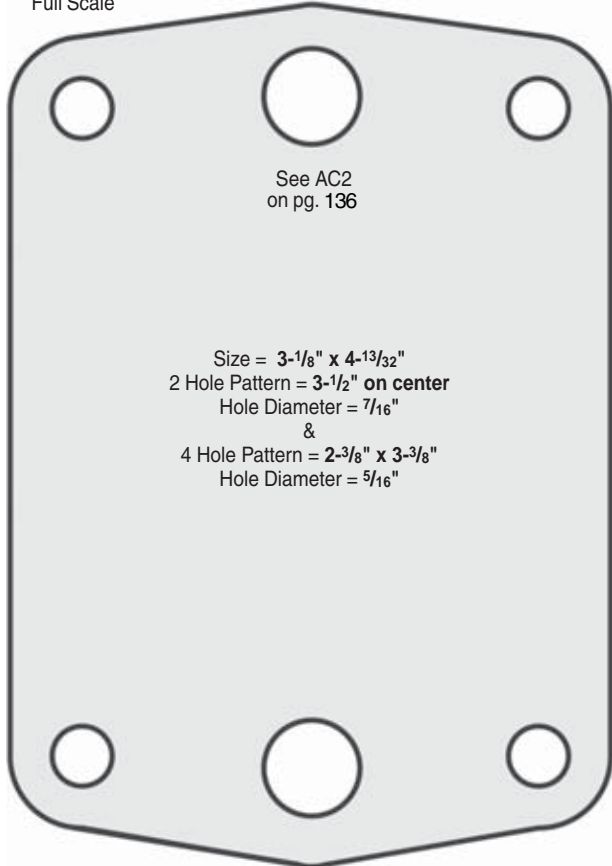


3.03207.915.3

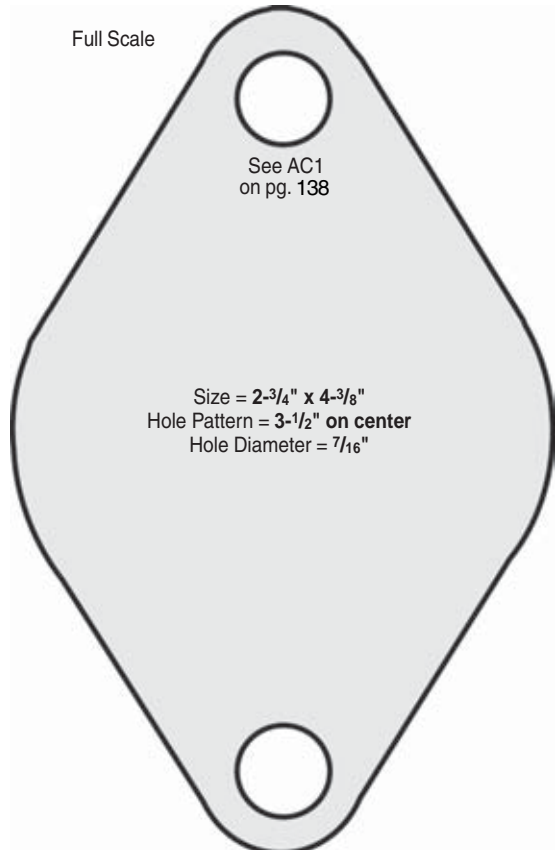
For the utmost performance in the most severe applications, we offer a precision cargo caster which utilizes a sealed precision ball bearing in the swivel raceway and two sealed precision ball bearings in the wheel. This reduces rolling and swiveling resistance while providing a caster with a 450 lbs. load capacity.

WHEEL DIAMETER	TREAD WIDTH	MOUNTING CODE	DYNAMIC LOAD	PART #	WHEEL MATERIAL	SWIVEL RADIUS	LOAD HEIGHT
2 - 1/4"	1 - 11/32"	AC1	450 lbs.	3.02207.915.3	Nylon - Precision Ball	2 - 1/8"	3 - 25/32"
				3.02209.915.3.WB1	Nylon - Precision Needle		
2 - 3/4"				3.03207.915.3	Nylon - Precision Ball	2 - 3/8"	4 - 1/32"
				3.03209.915.3.WB1	Nylon - Precision Needle		

Full Scale



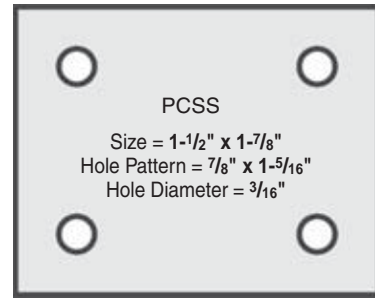
Full Scale



**CREEPER CASTERS**



CCS-300



PCSS  
 Size = 1-1/2" x 1-7/8"  
 Hole Pattern = 7/8" x 1-5/16"  
 Hole Diameter = 3/16"

Full Scale

**Model CCS-300**

This unique design of a low-load height is ideal for mechanic's garage creepers, along with its ability to run over cable and other obstacles. It also has many applications in the textile and associated industries.

WHEEL DIAMETER	DYNAMIC LOAD	PART #	WHEEL MATERIAL	SWIVEL RADIUS	LOAD HEIGHT
3"	150 lbs.	CCS-300	Steel	2-5/8"	3"

**FEATURES**

- Wheel Size: 7/8" x 1-1/2"
- Stem Size: 5/16" x 7/8"

**REFRIGERATOR/APPLIANCE CASTER**

**Model PAC1274ZN-2E**

This rigid caster provides easy moving and low overall height for large appliances during cleaning. Just remove glides and install.



PAC1274ZN-2E

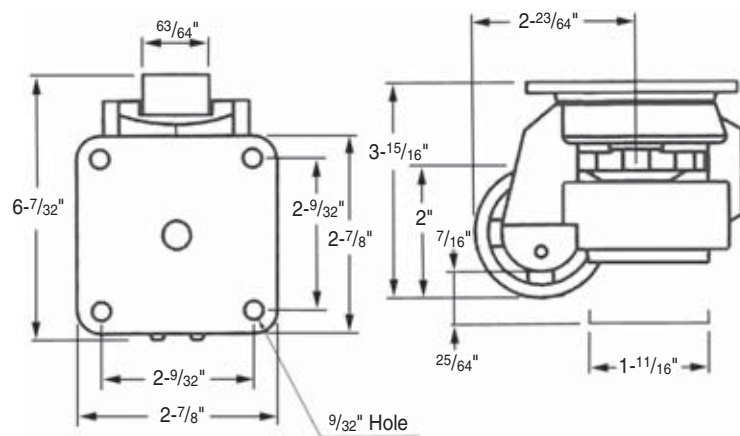
**LEVELING CASTER**

**Model GD-60F**

This caster has an internal leveling glide/stabilizer that allows heavy equipment to be moved and then immobilized. The steel inserted frame is diecast with aluminum alloy to maintain dynamic and thrust power. Other sizes and capacities available.



GD-60F

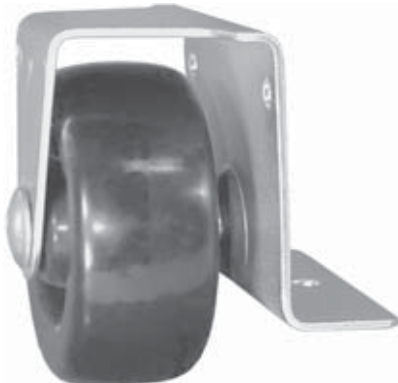


**FEATURES**

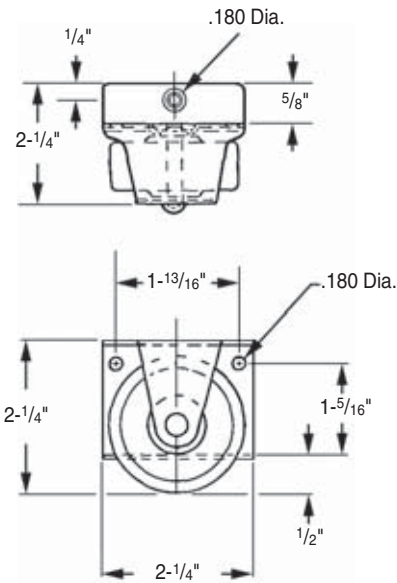
- Capacity: 550 lbs. each, 1,100 lbs. per 4
- Weight: 1.8 lbs. each

**SPECIALTY CASTERS**

**CONCEALED CASTERS**



CC-141-2PJ

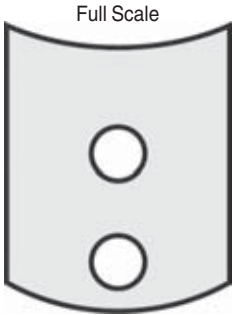


If you wish to conceal or hide casters on your furniture, cabinets or appliances, this 2" rigid model is the answer. The lower lip easily attaches to the equipment. Zinc plate and polyolefin wheel come standard.

WHEEL DIAMETER	TREAD WIDTH	DYNAMIC LOAD	PART #	FINISH	WHEEL MATERIAL
2"	7/8"	100 lbs.	CC-141-2PJ	Zinc	POLYOLEFIN



BRMR2000



1-1/2" x 1-3/16"  
Bolt Hole = 9/16" on center  
Hole Diameter = 1/4"

A rigid frame caster with zinc finish easily attached with two screws. Provides low overall height with good weight capacity. Ideal for side mounting.

WHEEL DIAMETER	TREAD WIDTH	DYNAMIC LOAD	PART #	FINISH	WHEEL MATERIAL	LOAD HEIGHT
2"	7/8"	100 lbs.	BRMR2000	Zinc	SOFT RUBBER	2-1/16"

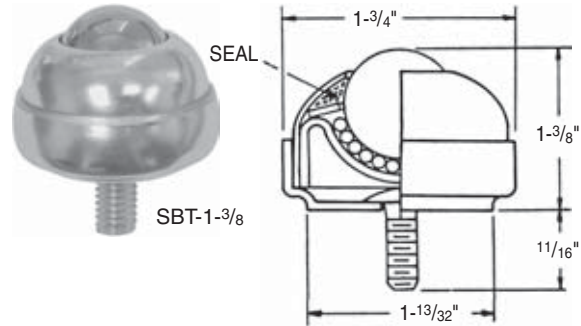
**BALL TRANSFERS**

**Sealed and Lubricated stud type Ball Transfer SBT-1**

By using a standard BT-1 chassis, we can supply a stud type transfer with high load carrying capacity. 1" diameter main ball rotates on 80 - 1/8" inch diameter support balls. Hardened ball cup and sealed protective cover assure low torque and long life.

For uneven surfaces use a 3:1 safety factor.

Thread Sizes: 1/4"-20, 5/16"-18, 3/8"-16  
Capacity: 75 lbs. per unit.

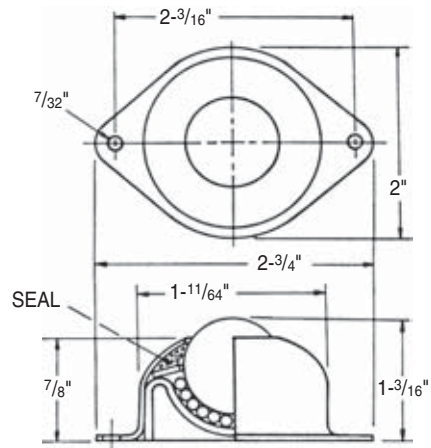


**Sealed and Lubricated Flange Mounted Ball Transfer BT-1**

Two hole, Flange mounted ball transfer, 1" diameter main ball rotates on 80 - 1/8" diameter support balls. Hardened ball cup and sealed protective cover assure low torque and long life.

For uneven surfaces use a 3:1 safety factor.

Capacity: 75 lbs. per unit.

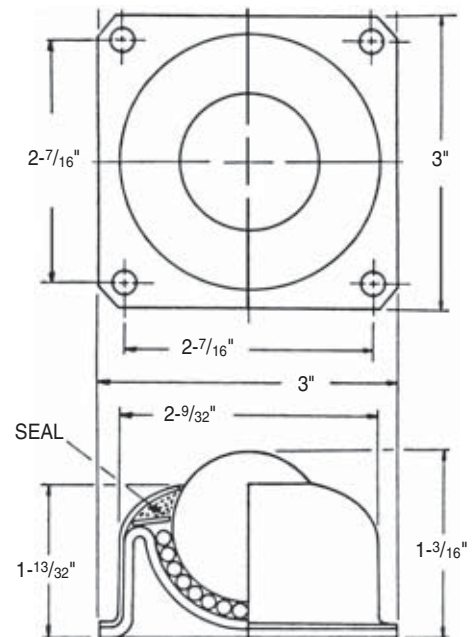


**Sealed and Lubricated Heavy Duty Ball Transfer BT-1-1/2**

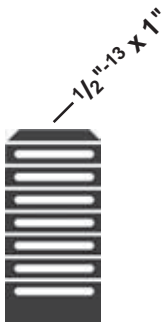
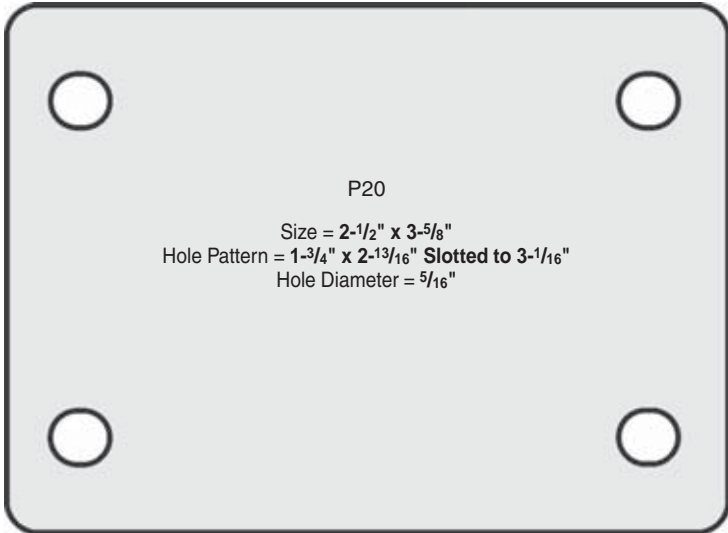
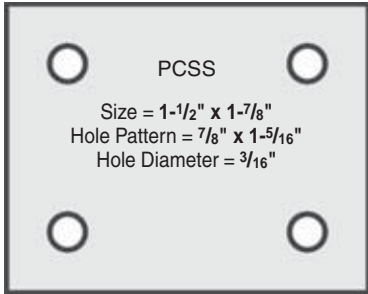
The 1-1/2" diameter main ball rotates on 90 - 3/16" diameter support balls. Hardened ball cup and sealed protective cover assure low torque and long life.

For uneven surfaces use a 3:1 safety factor.

Capacity: 250 lbs. per unit.



**SPECIALTY CASTERS**



T41

Drawings Full Scale

